



DIN SERIES

BALL VALVE, POPPET VALVE, PULL BREAK COUPLINGS



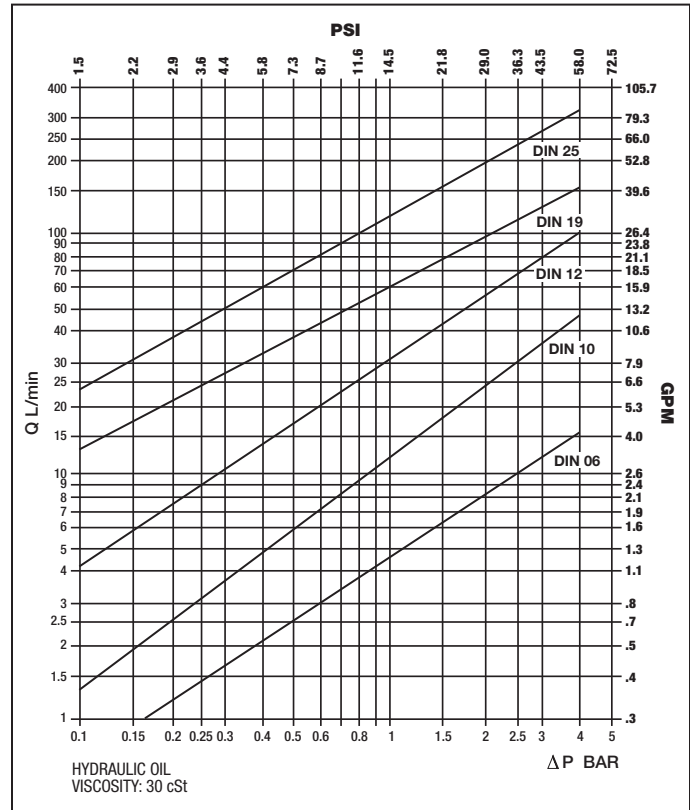
16

DIN Series, DINV poppet valve couplings



DIN Series, DINB ball valve couplings

Pressure Drop Characteristics



INTRODUCTION

Holmbury DIN Series couplings are interchangeable with Pioneer AG style couplings and are offered with a choice of ball or poppet valve for automatic flow shut off when disconnected.

The ball valve should be used for compatibility in existing application. Poppet-style valve is recommended for all new applications. Widely used in agricultural, mobile, and industrial applications.

The size 12 meets ISO 7241-1 type A design criteria and is interchangeable with Holmbury IA Series size 12 couplings.

CONSTRUCTION

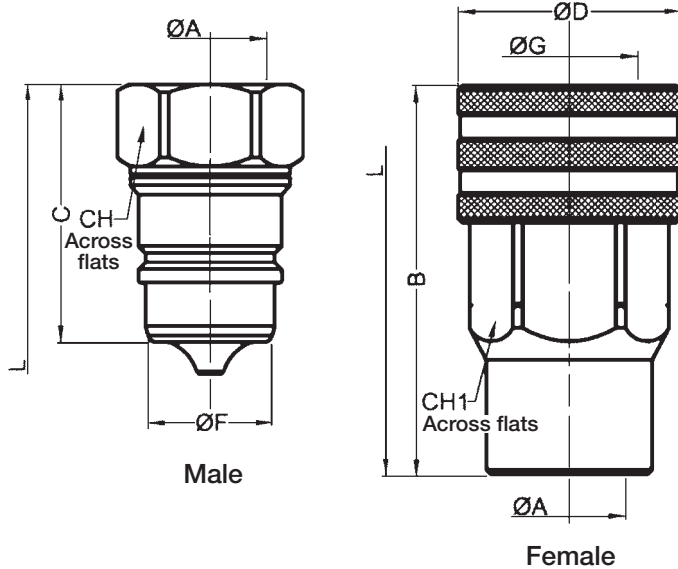
Zinc plated carbon steel with highly stressed components carbonitrided.

Nitrile seals with Teflon PTFE backing ring.

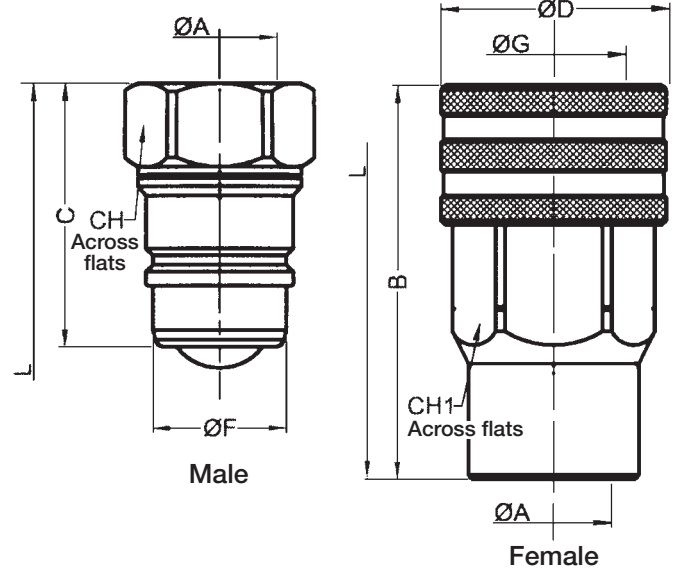


Holmbury

DINV Poppet – Style



DINB Ball – Style



DINV and DINB Dimensions

Type and Size	Body Size	Max. Oper. Pressure	A	B	C	CH	CH1	D	F	G	L*	Weight
	mm	Bar	NPTF Thread	Dimensions in millimeters								kg
	inches	PSI		Dimensions in inches								lb
DINB06	6	350	1/4	53.5	36	19	22	27	14.15	16.9	73	.16
DINV06	.25	5075		2.11	1.42	0.75	0.87	1.06	0.56	0.67	2.87	.35
DINB10	10	300	3/8	61	40.5	24	27	34	18.95	21.6	82.00	.32
DINV10	.375	4350		2.40	1.59	0.94	1.06	1.34	0.75	0.85	3.23	.70
DINB12	12	280	1/2	63.5	46	27	30	38	20.5	23.8	88.00	.36
DINV12	.5	3625		2.50	1.81	1.06	1.18	1.50	0.81	0.94	3.46	.80
DINB19	19	250	3/4	85	56	36	38	48	27.95	31.1	113.00	.68
DINV19	.75	3625		3.35	2.20	1.42	1.50	1.89	1.10	1.22	4.45	1.50
DINB25	25	230	1	96.5	63	41	45	55	31.3	34.6	127.00	1.20
DINV25	1	3335		3.80	2.48	1.61	1.77	2.17	1.23	1.36	5.00	2.65

Inches=mm/25.4 lbs=kg x 2.204622
*Overall length when coupled.

Order Codes

DINB 10 - F - 06 N	
DINB = Ball Valve DINV = Poppet Valve	Thread Gender Blank = Female
Body Size 06 = 1/4" 10 = 3/8" 12 = 1/2" 19 = 3/4" 25 = 1"	Thread Type N = NPTF
Gender F = Female Coupler M = Male Nipple	Thread size based on dash system 04 = 1/4" 12 = 3/4" 06 = 3/8" 16 = 1" 08 = 1/2"

Sizes listed are for reference only and are subject to change.

DIN Series Dust Cap

For more information on dust caps and order information, see page 38



Note: Not all thread types and sizes are available as stock items. Minimum order quantity may be required. Consult factory for details.