

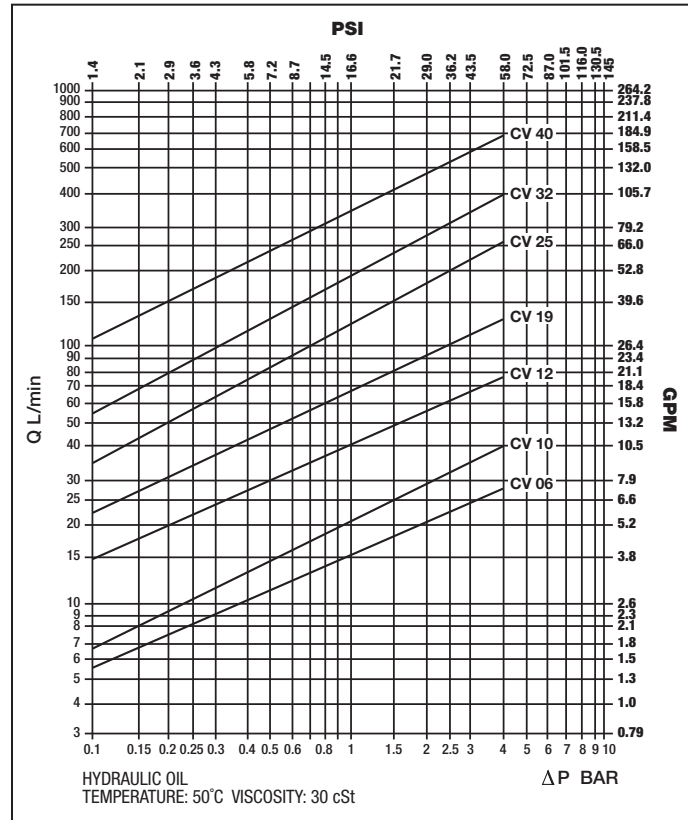


# CV SERIES

## CHECK VALVES



### Pressure Drop Characteristics (with lowest spring option) .5 BAR Spring



### 34 INTRODUCTION

One-way valve for in-line use.

Suitable for any type of hydraulic system using liquids that are not highly viscous. The standard types are in zinc plated carbon steel and are therefore especially suitable for non-corrosive mineral based oils and liquids.

#### FEATURES

Standard types:

- Good pressure / flow characteristics, see graphs.
- Valve body in zinc plated carbon steel.
- Piston in carbon steel.
- Internal spring in silicon steel - stabilized.
- Cracking points .5 bar (7 psi), 4 bar (58 psi), and 8 bar (116 psi) are available.

#### CONSTRUCTION

As a pressure sequence valve by changing the internal spring to an appropriate 'cracking point' value. For flow restrictor check valves a bleed hole can be provided, sized to customer requirements.

#### Order Codes

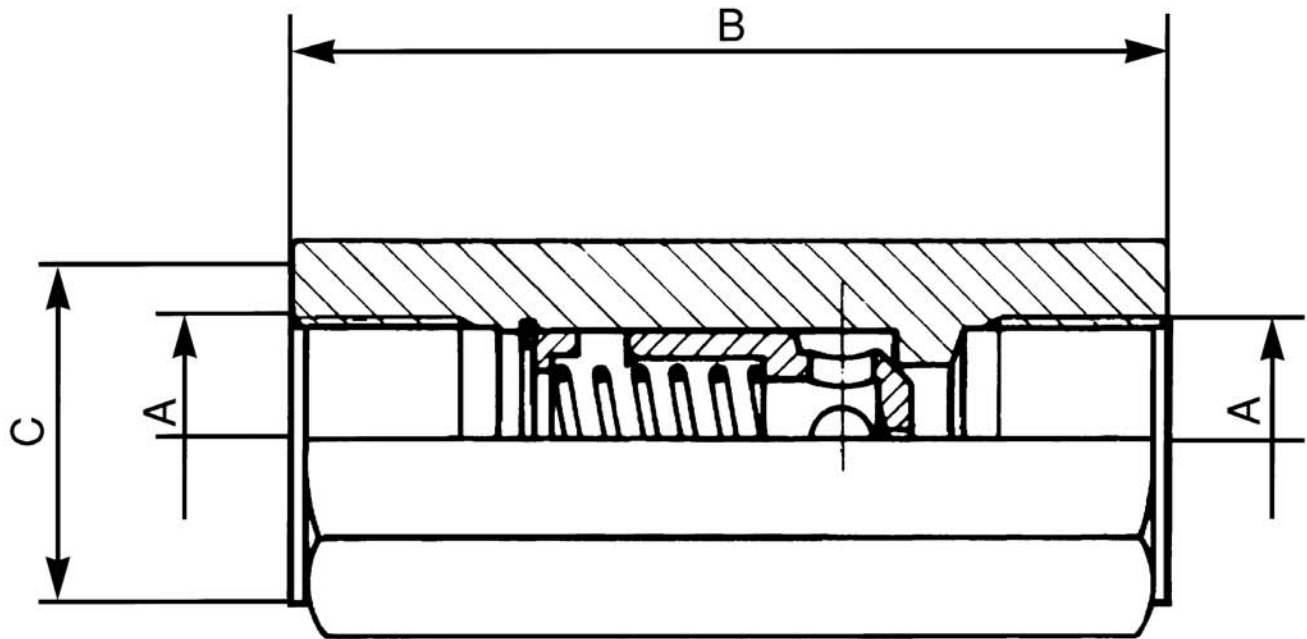
<b>Model</b>	CV	25	16	N	M	007	1.5
<b>CV = Carbon Steel</b>							
<b>CVS = Stainless Steel</b>							
<b>Body Size</b>							
04 = 1/8"	25 = 1"						
06 = 1/4"	32 = 1-1/4"						
10 = 3/8"	40 = 1-1/2"						
12 = 1/2"	50 = 2"						
19 = 3/4"							
<b>Thread Size</b>							
02 = 1/8"	16 = 1"						
04 = 1/4"	20 = 1-1/4"						
06 = 3/8"	24 = 1-1/2"						
08 = 1/2"	32 = 2"						
12 = 3/4"							
<b>Thread Type</b>							
G = BSPP	S = SAE (O-Ring Boss)						
N = NPTF							
<b>Optional Bleed Hole Diameter (in mm)</b>							
<b>Cracking Pressure</b>							
007 = 7 PSI (0.5 BAR)							
058 = 58 PSI (4 BAR)							
116 = 116 PSI (8 BAR)							
<b>Thread Gender</b>							
Blank = Female Ports							
M = Male Ports							
FM = Female Inlet, Male Outlet							
MF = Male Inlet, Female Outlet							

Note: Not all thread types and sizes are available as stock items. Minimum order quantity may be required. Consult factory for details.



**Holmbury**

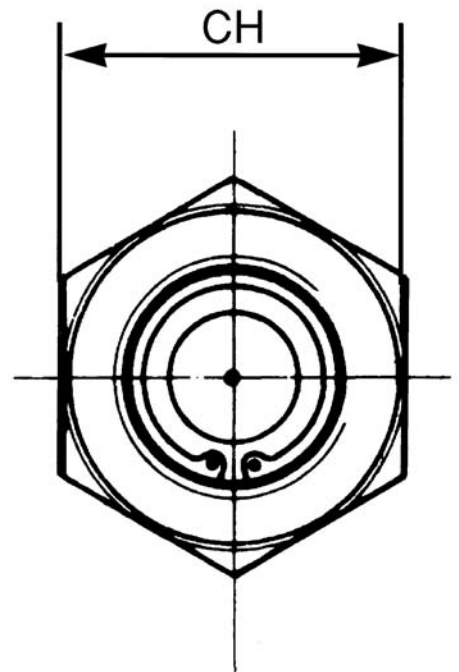
**CV SERIES, CHECK VALVES**



**Dimensions**

Type and Size	Body Size	Max. Oper. Pressure	A	B	C	CH
	mm	Bar	NPTF Thread	Dimensions in millimeters		
	inches	PSI		Dimensions in inches		
6	6.3	400	1/4"	60	21	19
	.248	5800		2.36	0.83	0.75
10	10	400	3/8"	70	27	24
	.393	5800		2.76	1.06	0.94
12	12	350	1/2"	77	33	30
	.472	5075		3.03	1.30	1.18
19	20	350	3/4"	90	40	36
	.787	5075		3.54	1.57	1.42
25	25	350	1"	106	59	45
	.984	5075		4.17	2.32	1.77
32	31.5	250	1-1/4"	123	63	55
	1.24	3625		4.84	2.48	2.17
40	40	250	1-1/2"	138	74	65
	1.57	3625		5.43	2.91	2.56

Inches=mm/25.4  
lbs=kg x 2.204622



\* NPT and SAE are standard. Other thread forms available on request, including BSPP.

All dimensions shown are for guidance only, if critical contact  
Holmbury Technical Department

Sizes listed are for reference only and are subject to change.